



## THE 411 ON FEEDER SYSTEMS

QSI Automation Inc. specializes in the design and manufacture of a variety of custom parts feeders and feeder systems.

### Q. What is a feeder system and what is it used for?

**A.** Feeder systems are designed and built to: 1. **Convey** parts in a specific order to present to an operator or automatic equipment for assembly; 2. **Orient parts** for easier handling; and 3. to **Sort** parts.

### Q. Are there different types of feeder systems?

**A.** Yes, three basic types: **bowls** are used to orient and/or sort parts; **inlines** move parts while maintaining orientation; **conveyors** move a large quantity of parts over a greater distance where orientation is not critical.

### Q. What kinds of applications use feeder systems?

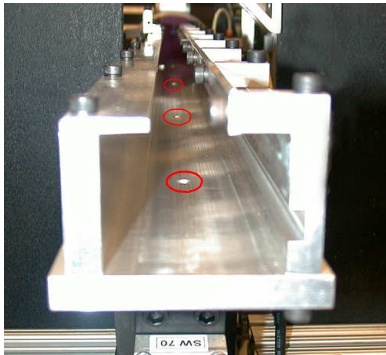
**A.** All sizes and shapes of parts can be fed. From small electrical terminals to large brackets and fasteners. Feeder systems are used in all industries including automotive, electronics, packaging, medical, house wares and construction.

### Q. Can you help salvage my existing feeder system?

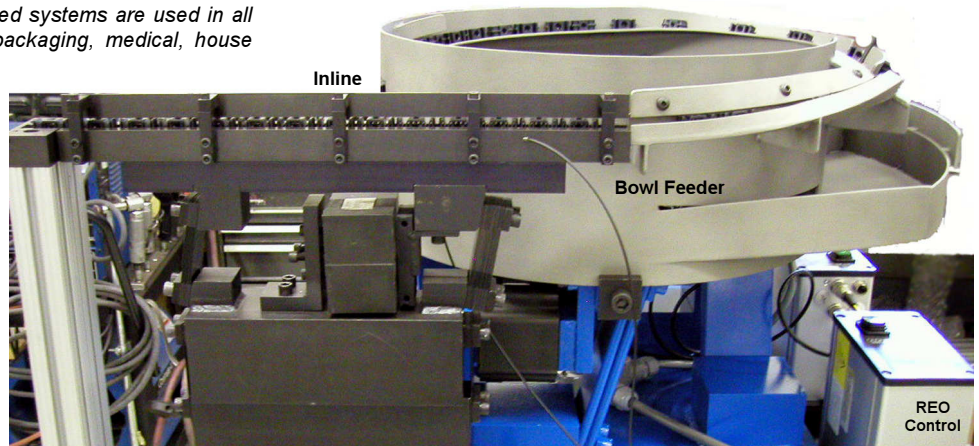
**A.** Yes. Many times a portion or all of an existing system can be used or modified for a new part or application. QSI has the capabilities to rework or completely rebuild an existing system.

### Q. How do I learn more about feeder systems?

**A.** Contact Dave Erdly, manager of QSI's Feeder Systems Department: (260)-693-1500. With over 20 years of experience in serving industry's feeder system requirements, QSI has the part feeding solutions you need.



End view of inline showing air-assist.



Vibratory feeder bowl with inline parts delivery.

## Marchelletta Named Sales Manager



Tony Marchelletta has joined the QSI team as sales manager for all products. Tony brings over 15 years of experience in sales and product management. He was recently product manager of vertical product for Cincinnati Milacron. At Milacron he also held the positions of director of vertical product and sales manager. Prior to Milacron he was national sales manager for Autojectors, Inc. At Autojectors he was involved in engineering, product management and sales for vertical machinery and automation systems. Tony has a Bachelor of Science in Electrical Engineering from Purdue University.

"We're excited about Tony joining our team. His broad experience with machinery and automation will be key in helping serve our customers. While taking on the sales and marketing responsibilities, Tony's initial focus will be to expand our distribution and customer support network," stated QSI Vice President, JT Munk. He will also work to establish and grow key partnerships, service existing accounts, and explore new markets.

Please feel free to contact Tony to assist with your automation, mold and machinery projects or if you are interested in being a part of the QSI sales and support network.

## Used Vertical Molding Machines in Stock

QSI's Rebuild Department has a variety of used vertical insert molding machines in stock from 10 tons and up or they can find the size you need. Contact department manager Rich Taube for all of your used vertical machinery needs - (260) 693-1500.

### Finders Fee Program Announced Rebuild Group Pays Cash for Used Vertical Machine Leads

QSI's rebuild group is offering cash for positive leads on used vertical injection molding machinery...up to \$1,000 depending on the size of the machine. Contact Rich Taube today with your opportunity: (260) 693-1500.



## New WWW. Launched

Product information,  
used machine listings  
and much more...  
Check us out at

[www.qsiautomation.com](http://www.qsiautomation.com)



Automated Assembly & Test Systems • Insert Molding Systems  
Feeder Systems • Vertical & Horizontal Injection Machine Rebuilds, Retrofits, Service  
Injection Mold Design & Manufacture • Vision Systems • Custom Fabrication

4585 S. State Road 9-57, Churubusco, IN 46723 Phone: (260)-693-1500 Fax: (260)-693-6507 [www.qsiautomation.com](http://www.qsiautomation.com)